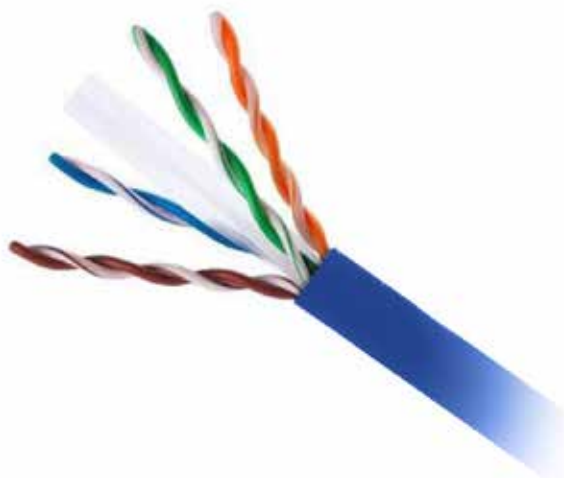


# OUTDOOR CATEGORY 6<sub>A</sub>

## ★ Features

Conductor	24AWG Solid Bare copper wire
Insu. / Thickness	Polythylene 0.26mm
Color Code	Pair 1 = Blue - White/Blue Pair 2 = Orange - White/Orange Pair 3 = Green - White/Green Pair 4 = Brown - White/Brown
Core Blinders	Mylar tape wrapping
Drain Wire	Solid Tinned Copper Wire (0.40mm)
Overall Screen	AL-Foil (AL layer side down) 100% wrapping
Outer Jacket	PE
Nom. Thickness	0.60mm
Approx. Dia. of Cable	6.50 +- 0.20mm
Jacket Color	Black
Listing and Ratings	Compliance EIA/TIA-568-C.2 CAT.6
Package	305m reel in a box



## 📊 Electrical Characteristic

DC Resistance	9.38 Ohms/100m Max
DC Resistance Unbalance	5% Max
Characteristic Impedance	100 +- 15% Ohms
Delay skew (max.)	45 ns/100m

## ⚙️ Technical Specification

Freq.	Atten. dB/100m	NEXT	PS-NEXT	ACR	PS ACR	ELF NEXT	PS-ELF NEXT	Return Loss	Propagation delay Max delay
[Mhz]	max	dB(min)	dB(min)	dB(min)	dB(min)	dB(min)	dB(min)	dB(min)	dB(min)
0.772	1.8	76.0	74.0	74.2	72.2	70.1	67.1	-	-
1	20.	74.3	72.3	72.3	70.3	67.8	64.8	20.0	570
4	3.8	65.3	63.3	63.3	59.5	55.8	52.8	23.0	552
8	5.3	60.8	58.8	58.8	53.5	49.7	46.7	24.5	546
10	6.0	59.3	57.3	57.3	51.4	47.8	44.8	25.0	545
16	7.6	56.2	54.2	54.2	46.7	43.7	40.7	25.0	543
20	8.5	54.8	52.8	52.8	44.3	41.8	38.8	25.0	542
25	9.5	53.3	51.3	51.3	41.9	39.8	36.8	24.3	541
31.25	10.7	51.9	49.9	49.9	39.2	37.9	34.9	23.6	540
62.5	15.4	47.4	45.4	45.4	30.0	31.9	28.9	21.5	538
100	19.8	44.3	42.3	42.3	22.5	27.8	34.8	20.1	537
200	29.0	39.8	37.8	37.8	8.8	21.8	18.8	18.0	536
250	32.8	38.3	36.3	36.3	3.5	19.8	16.8	17.3	536